



Propeller stirrer, 4-bladed

Standard stirring element for drawing the material to be mixed from the top to the bottom. It creates local shearing forces and axial flow in the vessel. This propeller stirrer is used at medium to high speeds.



Propeller stirrer, 3-bladed

Flow-efficient design for drawing the material to be mixed from the top and the bottom while creating minimum shearing forces. This propeller stirrer is used at medium to high speeds.



Propeller stirrer, 3-bladed

Flow-efficient design for drawing the material to be mixed from the top and the bottom while creating minimum shearing forces. This propeller stirrer is used at medium to high speeds.



Dissolver stirrer

This stirrer provides radial flow for drawing the material to be mixed from the top and the bottom while creating high turbulence and high shearing forces for particle reduction. Medium to high speeds required.

axial flow



Name	R 1342	R 1345	R 2302
Ident. No.	0000741000	0000741300	0000739000
Stirrer (Ø) mm	50	100	150
Shaft (Ø) mm	8	8	13
Shaft length mm	350	540	800
Max. speed rpm	2000	800	600
	(A)(B)(C) (D)(F)	(A)(B)(C) (D)(F)(G)	(H)

axial flow



Name	R 1381	R 1382	R 1401	R 1405
Ident. No.	0001296000	0001295900	0001242900	0001289800
Stirrer (Ø) mm	45	55	55	45
Shaft (Ø) mm	8	8	–	–
Shaft length mm	350	350	–	–
Max. speed rpm	2000	2000	–	–
	(A)(B)(C) (D)(F)	(A)(B)(C) (D)(F)	(E)	(E)

axial flow



Name	R 1385	R 1388	R 1389 (PTFE-coated)
Ident. No.	0000477700	0000477800	0002343600
Stirrer (Ø) mm	140	140	75
Shaft (Ø) mm	10	10	8
Shaft length mm	550	800	350
Max. speed rpm	800	400	800
	(A)(B)(C) (D)(F)(G)	(A)(B)(C) (D)(F)(G)	(A)(B)(C)

radial flow



Name	R 1300	R 1302	R 1303	R 1402
Ident. No.	0000513500	0002387900	0002746700	0001243300
Stirrer (Ø) mm	80	100	42	42
Shaft (Ø) mm	8	10	8	–
Shaft length mm	350	350	350	–
Max. speed rpm	2000	1000	2000	–
	(A)(B)(C) (D)(F)(G)	(A)(B)(C) (D)(F)(G)	(A)(B)(C) (D)(F)	(E)



EUROSTAR 20
digital



EUROSTAR 40
digital



EUROSTAR 60
digital



EUROSTAR 60
control



EUROSTAR 100
digital



EUROSTAR 100
control



EUROSTAR 200
digital



EUROSTAR 200
control



Turbine stirrer

This stirrer is used for drawing the material to be mixed from above while generating axial flow within the vessel. It carries a minimum level of danger of injury when contact is made with vessel. It also creates minimum shearing forces and is used at medium to high speeds.



Centrifugal stirrer

Two-bladed stirrer who's blades open with increasing speed. Perfect for stirring in round vessels with narrow necks and the effect is similar to that of a 4-bladed propeller stirrer. Medium to high speeds required.



Paddle stirrer

This stirrer creates tangential flow, minimum turbulence, good heat exchange and gentle treatment of the product. Low to medium speeds required.



Anchor stirrer

This stirrer creates tangential flow, high shearing rate at the edges, minimum deposits on the vessel wall making them great for polymer reactions and even distribution of high mineral contents in liquids. Ideal for medium to highly viscous fluids. Low speeds required.

axial flow



Name	R 1311	R 1312	R 1313
Ident. No.	0002332900	0002333000	0002333100
Stirrer (Ø) mm	30	50	70
Shaft (Ø) mm	8	8	10
Shaft length mm	350	350	400
Max. speed rpm	2000	2000	800
	(A) (F) (C)	(A) (B) (C) (D) (F)	(A) (B) (C) (D) (F)

axial flow



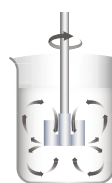
Name	R 1352	R 1355
Ident. No.	0000756900	0001132700
Stirrer (Ø) mm	60 / 15	100 / 24
Shaft (Ø) mm	8	8
Shaft length mm	350	550
Max. speed rpm	2000	800
	(A) (B) (C) (D) (F)	(A) (B) (C) (D) (F)

tangential flow



Name	R 1375	R 1376	R 2311
Ident. No.	0000757700	0000757800	0000739500
Stirrer (Ø) mm	70	150	150
Shaft (Ø) mm	8	10	13
Shaft length mm	550	550	800
Max. speed rpm	800	800	600
	(A) (B) (C) (D) (F)	(B) (C) (D) (F) (G)	(H)

tangential flow



Name	R 1330	R 1331	R 1333
Ident. No.	0002022300	0002022400	0002747400
Stirrer (Ø) mm	45	90	150
Shaft (Ø) mm	8	8	10
Shaft length mm	350	350	550
Max. speed rpm	1000	1000	800
	(A) (B) (C) (D) (F)	(A) (B) (C) (D) (F) (G)	(B) (C) (D) (F) (G)



EUROSTAR 200
control P4

(D)



EUROSTAR 20 high speed
digital

(E)



RW 20
digital

(F)



RW 28
digital

(G)



RW 47
digital

(H)