

APPLICATION

Wall mounting

Vertical mounting

DETAILS

Waterflow around 13l/min
at 3 Bars pressure

Test pressure: 9 Bars/air

Max working pressure: 10 Bars

SURFACE PROTECTION

Epoxy powder coating
RAL 7035

MATERIALS

Brass

Handle in PP

HEADWORK SEALING

EPDM temperature
working range: 0-70°

CERAMIC temperature
working range: 0-70°

CONNECTION TAP

Male thread G3/8"

STANDARD AND NORMS

EN13792:2000

DIN12898

DIN12918

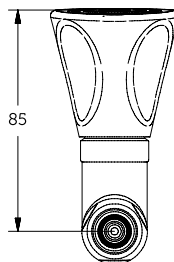
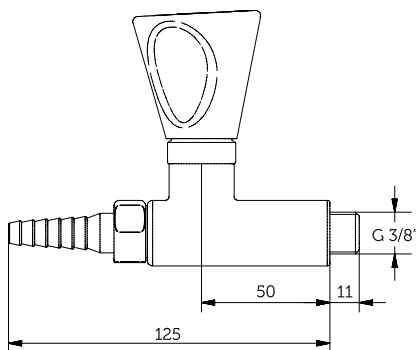
ISO228/1

OPTIONS

Joystick handle 11000.1MDSJ

With ceramic headwork 90°
11000.1MDSC

With chemical nickel
plating 17microns inside
11000.1MDSNK



APPLICATION

Wall mounting

Vertical mounting

DETAILS

Waterflow around 13l/min
at 3 Bars pressure

Test pressure: 9 Bars/air

Max working pressure: 10 Bars

SURFACE PROTECTION

Epoxy powder coating
RAL 7035

MATERIALS

Brass

Handle in PP

HEADWORK SEALING

EPDM temperature
working range: 0-70°

CERAMIC temperature
working range: 0-70°

CONNECTION TAP

Male thread G3/8"

STANDARD AND NORMS

EN13792:2000

DIN12898

DIN12918

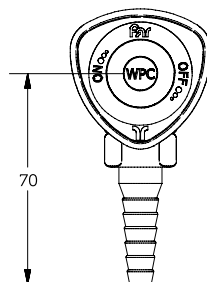
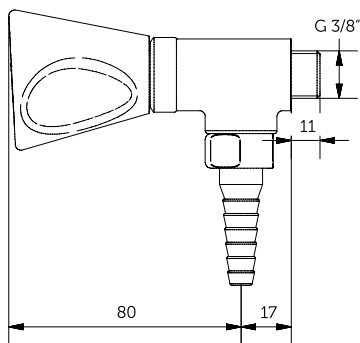
ISO228/1

OPTIONS

Joystick handle 11001.1MDSJ

With ceramic headwork 90°
11001.1MDSC

With chemical nickel
plating 17 microns inside
11001.1MDSNK



APPLICATION

Wall mounting
Vertical mounting

DETAILS

Waterflow around 13l/min
at 3 Bars pressure
Test pressure: 9 Bars/air
Max working pressure: 10 Bars

SURFACE PROTECTION

Epoxy powder coating
RAL 7035

MATERIALS

Brass
Handle in PP

HEADWORK SEALING

EPDM temperature
working range: 0-70°
CERAMIC temperature
working range: 0-70°

CONNECTION TAP

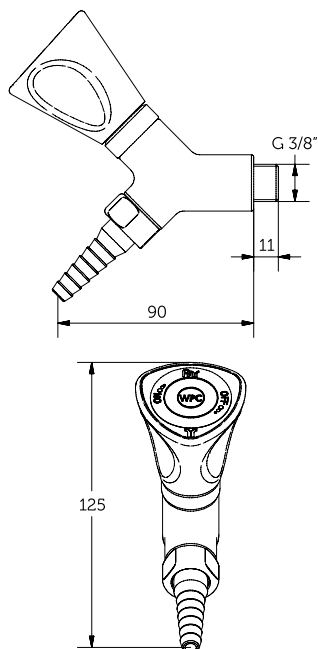
Male thread G3/8"

STANDARD AND NORMS

EN13792:2000
DIN12898
DIN12918
ISO228/1

OPTIONS

Joystick handle 11003.1MDSJ
With ceramic headwork 90°
11003.1MDSC
With chemical nickel
plating 17 microns inside
11003.1MDSNK



APPLICATION

Wall mounting

Vertical mounting

DETAILS

Waterflow around 13l/min
at 3 Bars pressure

Test pressure: 9 Bars/air

Max working pressure: 10 Bars

SURFACE PROTECTION

Epoxy powder coating
RAL 7035

MATERIALS

Brass

Handle in PP

HEADWORK SEALING

EPDM temperature
working range: 0-70°

CERAMIC temperature
working range: 0-70°

CONNECTION TAP

Male thread G1/2"

STANDARD AND NORMS

EN13792:2000

DIN12898

DIN12918

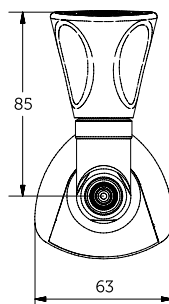
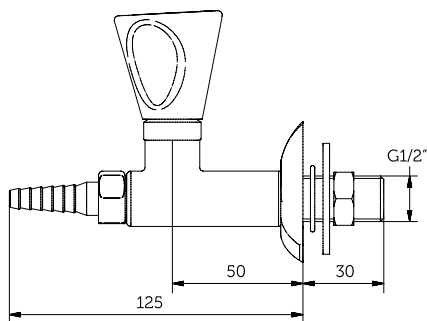
ISO228/1

OPTIONS

Joystick handle 11010.2MDSJ

With ceramic headwork 90°
11010.2MDSC

With chemical nickel
plating 17 microns inside
11010.2MDSN



APPLICATION

Wall mounting

Vertical mounting

DETAILS

Waterflow around 13l/min
at 3 Bars pressure

Test pressure: 9 Bars/air

Max working pressure: 10 Bars

SURFACE PROTECTION

Epoxy powder coating
RAL 7035

MATERIALS

Brass

Handle in PP

HEADWORK SEALING

EPDM temperature
working range: 0-70°

CERAMIC temperature
working range: 0-70°

CONNECTION TAP

Male thread G1/2"

STANDARD AND NORMS

EN13792:2000

DIN12898

DIN12918

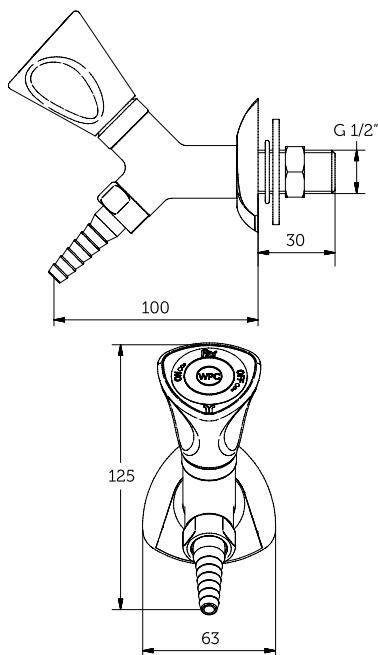
ISO228/1

OPTIONS

Joystick handle 11011.2MDSJ

With ceramic headwork 90°
11011.2MDSC

With chemical nickel
plating 17 microns inside
11011.2MDSNK



APPLICATION

Wall mounting
Vertical mounting

DETAILS

Waterflow around 13l/min
at 3 Bars pressure
Test pressure: 9 Bars/air
Max working pressure: 10 Bars

SURFACE PROTECTION

Epoxy powder coating
RAL 7035

MATERIALS

Brass
Handle in PP

HEADWORK SEALING

EPDM temperature
working range: 0-70°
CERAMIC temperature
working range: 0-70°

CONNECTION TAP

Male thread G1/2"

STANDARD AND NORMS

EN13792:2000
DIN12898
DIN12918
ISO228/1

OPTIONS

Joystick handle 11012.2MDSJ
With ceramic headwork
90° 11012.2MDSC
With chemical nickel
plating 17 microns inside
11012.2MDSNK

