

APPLICATION

Wall mounting

DETAILS

Waterflow around 17l/min
at 3 Bars pressure

Test pressure: 9 Bars/air

Max working pressure:
10 Bars

SURFACE PROTECTION

Epoxy powder coating
RAL 7035

MATERIALS

Brass

HEADWORK SEALING

CERAMIC kartridge
temperature working
range: 0-70°

CONNECTION TAP

Male thread G1/2" with "S"
coupling 130 - 190 mm

STANDARD AND NORMS

EN13792:2000

DIN12898

DIN12918

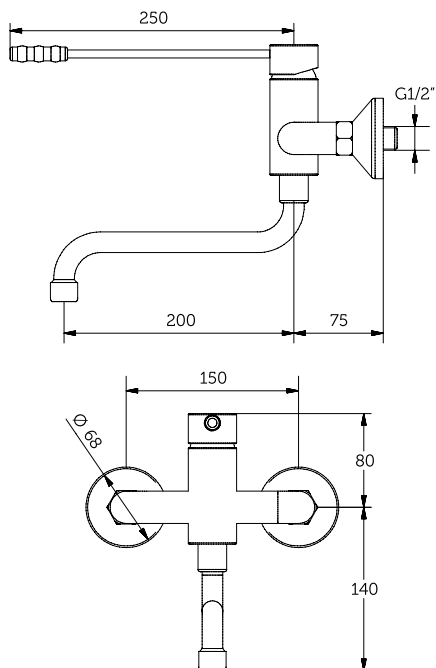
ISO228/1

OPTIONS

Spout:

200 - 250

300 - 350 mm



APPLICATION

Wall mounting

DETAILS

Waterflow around 17l/min
at 3 Bars pressure

Test pressure: 9 Bars/air

Max working pressure:
10 Bars

SURFACE PROTECTION

Epoxy powder coating
RAL 7035

MATERIALS

Brass

HEADWORK SEALING

CERAMIC kartridge
temperature working
range: 0-70°

CONNECTION TAP

Male thread G1/2"

STANDARD AND NORMS

EN13792:2000

DIN12898

DIN12918

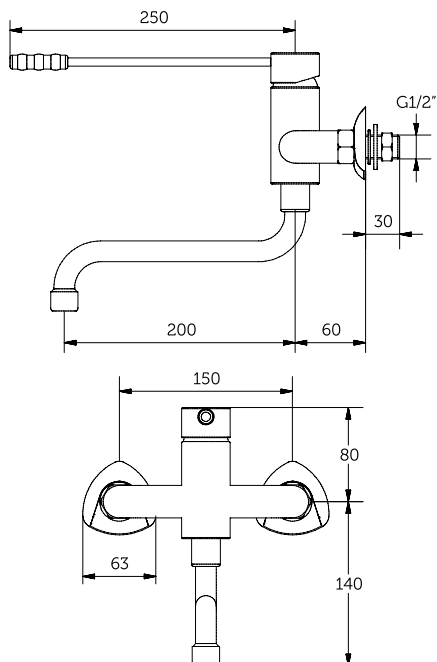
ISO228/1

OPTIONS

Spout:

200 - 250

300 - 350 mm



APPLICATION

Wall mounting

DETAILS

Waterflow around 17l/min
at 3 Bars pressure

Test pressure: 9 Bars/air

Max working pressure:
10 Bars

SURFACE PROTECTION

Epoxy powder coating
RAL 7035

MATERIALS

Brass

HEADWORK SEALING

CERAMIC kartridge
temperature working
range: 0-70°

CONNECTION TAP

Flex. female nut F3/8"

STANDARD AND NORMS

EN13792:2000

DIN12898

DIN12918

ISO228/1

OPTIONS

Spout:

200 - 250

300 - 350 mm

