

APPLICATION

Wall mounting - Vertical mounting

DETAILS

Test pressure: 9 Bars/air

Max working pressure: 7 Bars

SURFACE PROTECTION

Epoxy powder coating
RAL 7035

MATERIALS

Brass

Handle in PP

HEADWORK SEALING

CERAMIC and Nitrile

CONNECTION TAP

Male thread G1/2"

STANDARD AND NORMS

EN13792:2000

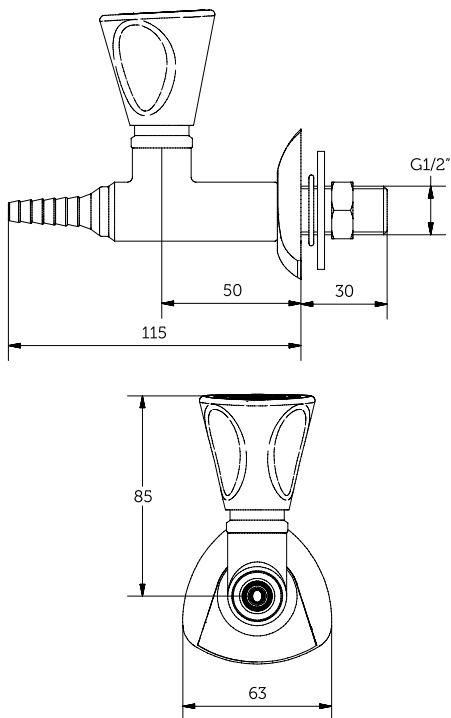
DIN12898

DIN12918

ISO228/1

OPTIONS

With chemical nickel
plating 17 microns inside



APPLICATION

Wall mounting - Vertical
mounting

DETAILS

Test pressure: 9 Bars/air

Max working pressure: 7 Bars

SURFACE PROTECTION

Epoxy powder coating
RAL 7035

MATERIALS

Brass

Handle in PP

HEADWORK SEALING

CERAMIC and Nitrile

CONNECTION TAP

Male thread G1/2"

STANDARD AND NORMS

EN13792:2000

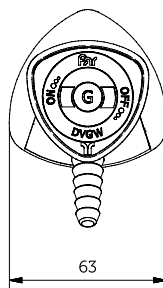
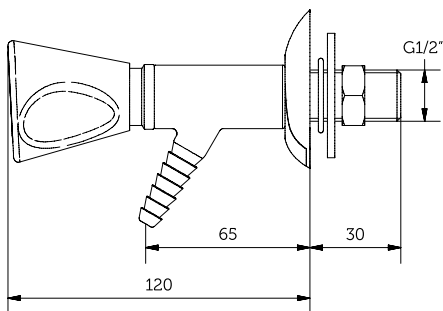
DIN12898

DIN12918

ISO228/1

OPTIONS

With chemical nickel
plating 17 microns inside



APPLICATION

Wall mounting - Vertical mounting

DETAILS

Test pressure: 9 Bars/air

Max working pressure: 7 Bars

SURFACE PROTECTION

Epoxy powder coating
RAL 7035

MATERIALS

Brass

Handle in PP

HEADWORK SEALING

CERAMIC and Nitrile

CONNECTION TAP

Male thread G1/2"

STANDARD AND NORMS

EN13792:2000

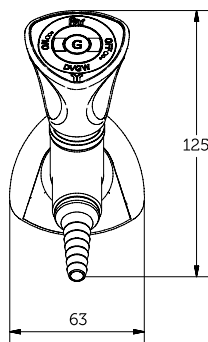
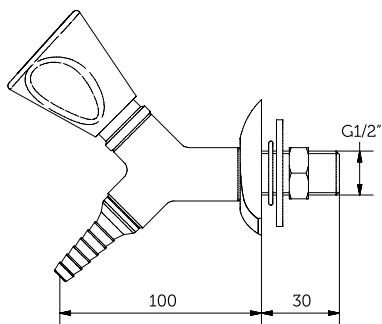
DIN12898

DIN12918

ISO228/1

OPTIONS

With chemical nickel plating 17 microns inside



APPLICATION

Wall mounting - Vertical mounting

DETAILS

Test pressure: 9 Bars/air

Max working pressure: 7 Bars

SURFACE PROTECTION

Epoxy powder coating
RAL 7035

MATERIALS

Brass

Handle in PP

HEADWORK SEALING

CERAMIC and Nitrile

CONNECTION TAP

Male thread G1/2"

STANDARD AND NORMS

EN13792:2000

DIN12898

DIN12918

ISO228/1

OPTIONS

With chemical nickel
plating 17 microns inside

